

Darwin Initiative: Half Year Report

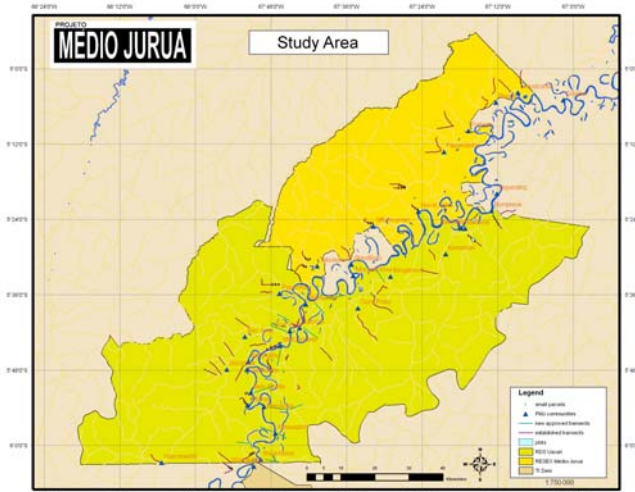
(due 31 October 2008 – extended to 10 December 2008)

| | |
|---------------------------------|--|
| Project Ref. No. | R15176 (UEA); Darwin Ref. 16-001 |
| Project Title | <i>Community-based sustainable management of forest resources in Amazonian extractive reserves</i> |
| Country | Brazil |
| UK Organisation | University of East Anglia |
| Collaborator(s) | 1) Secretaria do Estado do Meio Ambiente e Desenvolvimento Sustentável (SDS), Environmental Secretariat, State of Amazonas, Brazil; (2) Brazilian Institute of the Environment and Natural Renewable Resources (IBAMA), Brazil |
| Project Leader | Prof Carlos A. Peres |
| Report date | 31 October 2008; extension to 10 December 2008 |
| Report No. (HYR 1/2/3/4) | HYR 1 |
| Project website | N/A |

1. Outline progress over the last 6 months (April – September) against the agreed baseline timetable for the project (if your project has started less than 6 months ago, please report on the period since start up).

During this period (1 April – 30 November 2008) we have made a significant amount of progress, both in relation to field activities and discussions with SDS, IBAMA and the management council of the two forest reserves in which we are working in relation to the consolidation of our Darwin project in the Médio Juruá region of the State of Amazonas, western Brazilian Amazonia. These activities can be summarised as following:

- We have designed, cut, marked and mapped all remaining transects in terra firme and várzea forest for field sampling following reserve council approval of transect preparation. In total we will be sampling 93 transects of 4 to 5 km in length, not all of which are shown in Figure 1.
- We have now consolidated on our household-scale weekly interview protocol, and we are currently obtaining detained data on household economics, including levels of subsistence consumption and sales of all forest and aquatic products extracted. In total we will be sampling over 353 households from 30 local communities across the Médio Juruá Extractive Reserve and the neighbouring Uacari Sustainable Development Reserve.
- We have consolidated negotiations with the Fishing Cooperative of Carauari regarding access rights by and user regulations for the local fleet of commercial fishing boats using long gillnets across the 83 Oxbow Lakes encompassed by the two reserves.



Changes to the project schedule/workplan: no

3. Are there any other issues you wish to raise relating to the project or to Darwin's management, monitoring, or financial procedures?

Yes, a minor concern in relation to the current financial structure of the project. Despite the significantly stronger Brazilian Real (R\$) in relation to the project currency (GBP) for long periods since the project budget was originally planned, which effectively resulted in a 20% devaluation of the project funds, the project remains viable financially in relation to all operational costs in the field, which accounts for the bulk of the project expenditure (e.g. food supplies; fuel for the boats; local wages for project field assistants and "monitores", which have been raised from R\$15/day to R\$20/day). However, the "Subsistence & Travel" budget categories of the project (according to the UEA budget categories) have been considerably more expensive (in GBP) than initially anticipated. This discrepancy can be solved by simply moving some of the funds from "Collaborator Staff" and "Equipment", with no net changes in the project budget. I would be happy to send a more detailed explanation of how these funds could be transferred from one budget category to another in order to sustain the project implementation schedule and objectives into its 2nd and 3rd Yrs.

If you were asked to provide a response to this year's annual report review with your next half year report, please attach your response to this document.

Please note: Any planned modifications to your project schedule/workplan or budget should not be discussed in this report but raised with the Darwin Secretariat directly.

Please send your **completed form email** to Eilidh Young, Darwin Initiative M&E Programme at Darwin-Projects@ectf-ed.org.uk. The report should be between 1-2 pages maximum. **Please state your project reference number in the header of your email message eg Subject: 14-075 Darwin Half Year Report**